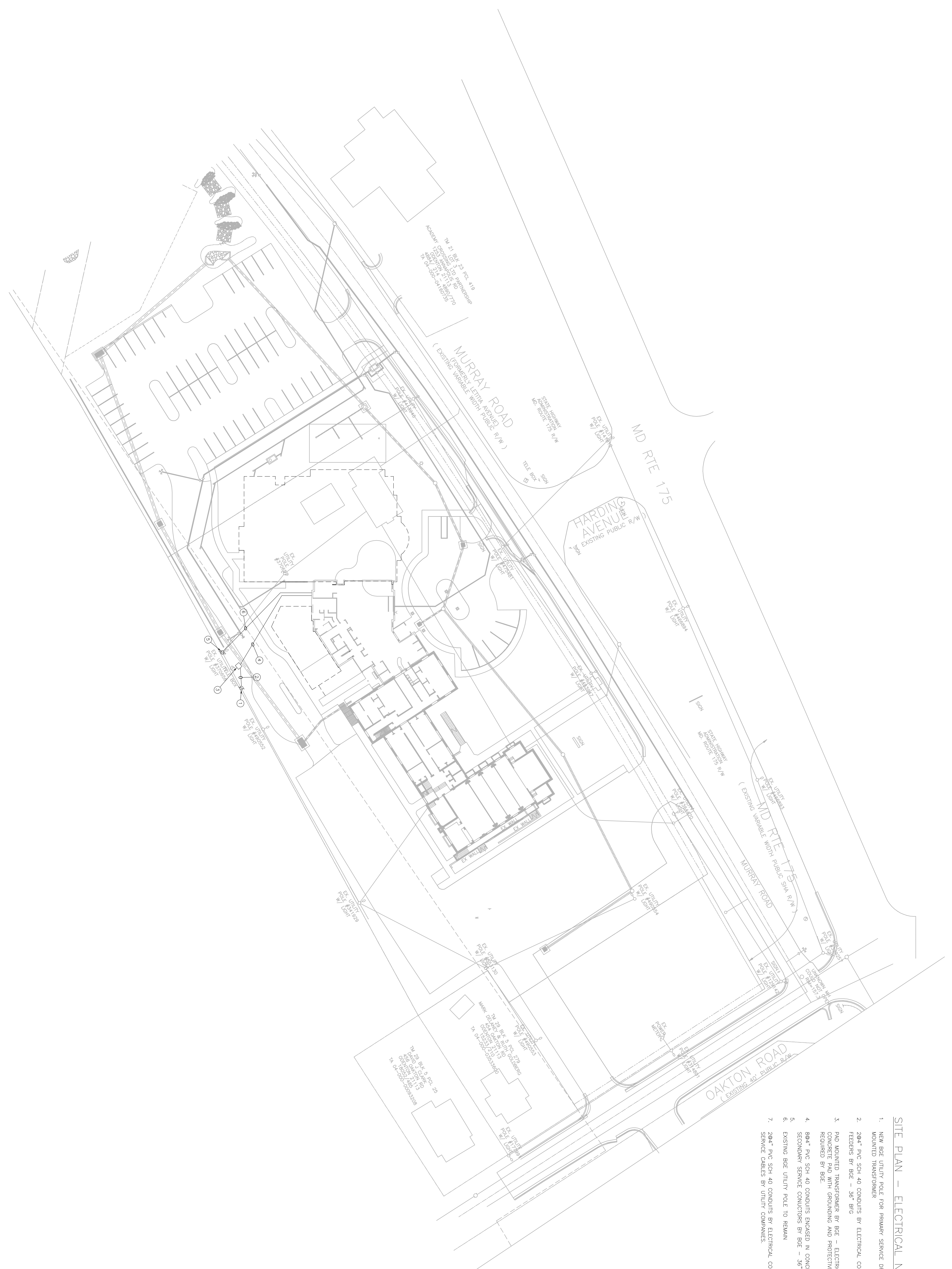


SITE PLAN - ELECTRICAL



SITE PLAN - ELECTRICAL NOTES

1. NEW BEU UTILITY POLE FOR PRIMARY SERVICE DROP TO NEW POWER COMPANY PAD MOUNTED TRANSFORMER
2. 204" PVC SCH 40 CONDUITS BY ELECTRICAL CONTRACTOR FOR PRIMARY SERVICE FEEDERS BY BEU - 36" BFG
3. PAD MOUNTED TRANSFORMER BY EEC - ELECTRICAL CONTRACTOR TO PROVIDE A CONCRETE PAD WITH GROUNDING AND PROTECTIVE BOLARDS ON THREE SIDES AS REQUIRED BY EEC.
4. 804" PVC SCH 40 CONDUITS ENCASED IN CONCRETE BY ELECTRICAL CONTRACTOR OF SECONDARY SERVICE CONDUCTORS BY BEU - 36" BFG
5. EXISTING BEU UTILITY POLE TO REMAIN
6. 204" PVC SCH 40 CONDUITS BY ELECTRICAL CONTRACTOR FOR TELEPHONE AND CATV SERVICE CABLES BY UTILITY COMPANIES.

REVISIONS		
NO.	DESCRIPTION	DATE

PARAGON
 Engineering Services
 MECHANICAL - ELECTRICAL - PLUMBING
 CONSULTING OFFICE

2201 South Queen Street, York, PA 17402-4177 | 804-331-4700 (Fax) | 804-353-1700
 BRIDGE VALLEY CENTER | BARTON-MARYLAND OFFICE
 5200 Highway 21, Suite 340, Abersdeen, PA 18104 | 30 Linn Road, Suite 102, North East, MD 21801
 (800) 291-2066 • Fax (814) 331-4612 • Email: MPE@Paragon.com | (814) 331-4612 • Email: MPE@Paragon.com

CORNERSTONE
 DESIGN ARCHITECTS

4850 W. CHESTNUT STREET, SUITE 400
 P.O. BOX 1788
 LANCASTER, PA 17608
 TEL: 717.435.1800 FAX: 717.435.1801

WELCOME CENTER ADDITION
 FOR:
NICHOLS-BETHEL UMC
 1239 Murray Road
 Odenton, MD 21113

E104

PROJECT PHASE: DETAILED DESIGN
 DRAWN BY: KJM DATE: 2010.04.01
 DESIGNER: RSF SCALE: AS NOTED
 PROJECT NO.: 07-0331-002
 DRAWING NAME: SITE PLAN - ELECTRICAL
 SHEET NO.

Paragon Engineering Services Inc. shall retain all copyright, trademark and other intellectual property rights in all drawings, specifications, reports, data, and any other information of records furnished to the Client for use with respect to this contract. These documents may not be used by any other party for any other project without written consent from Paragon Engineering Services Inc.