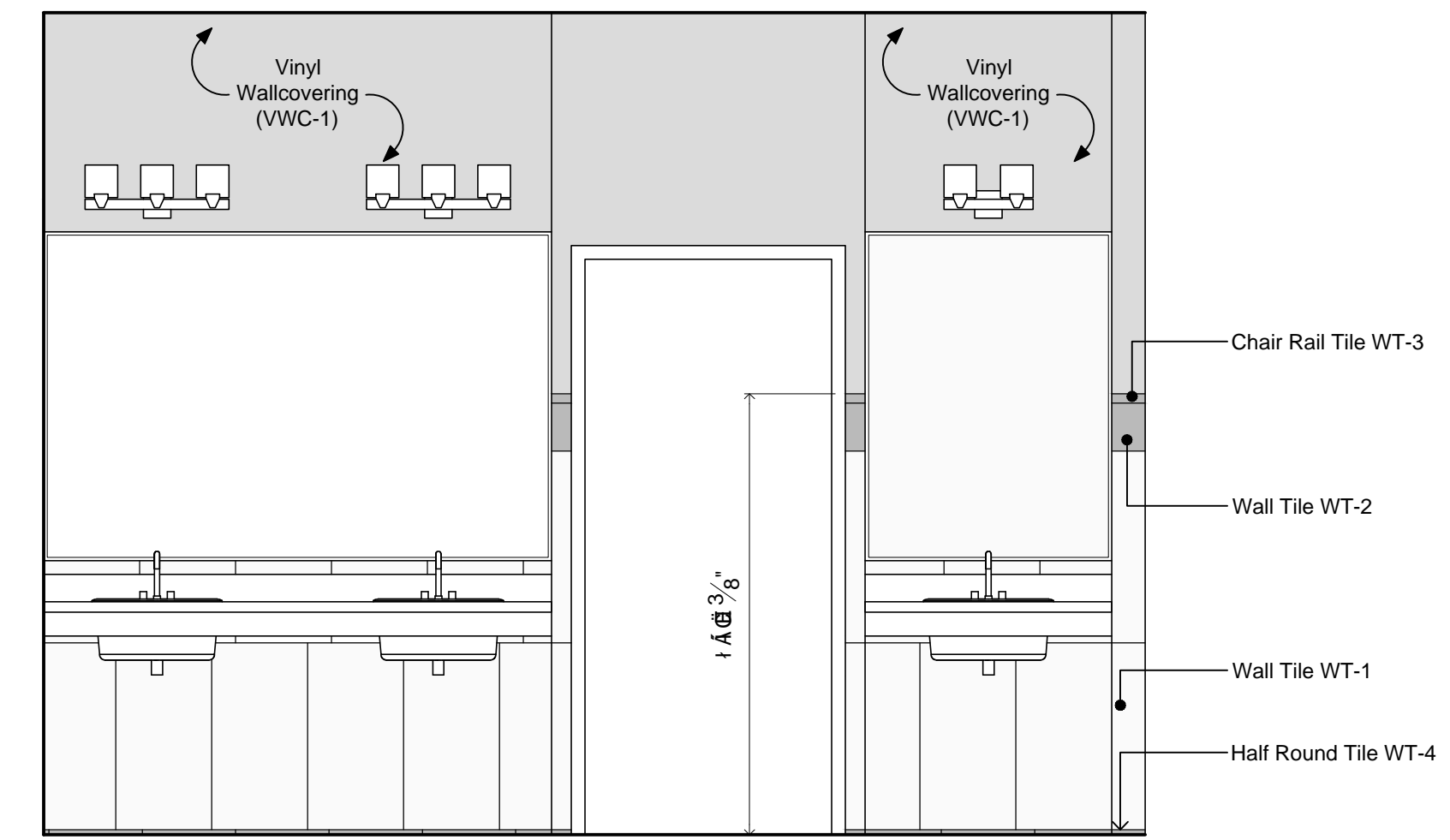


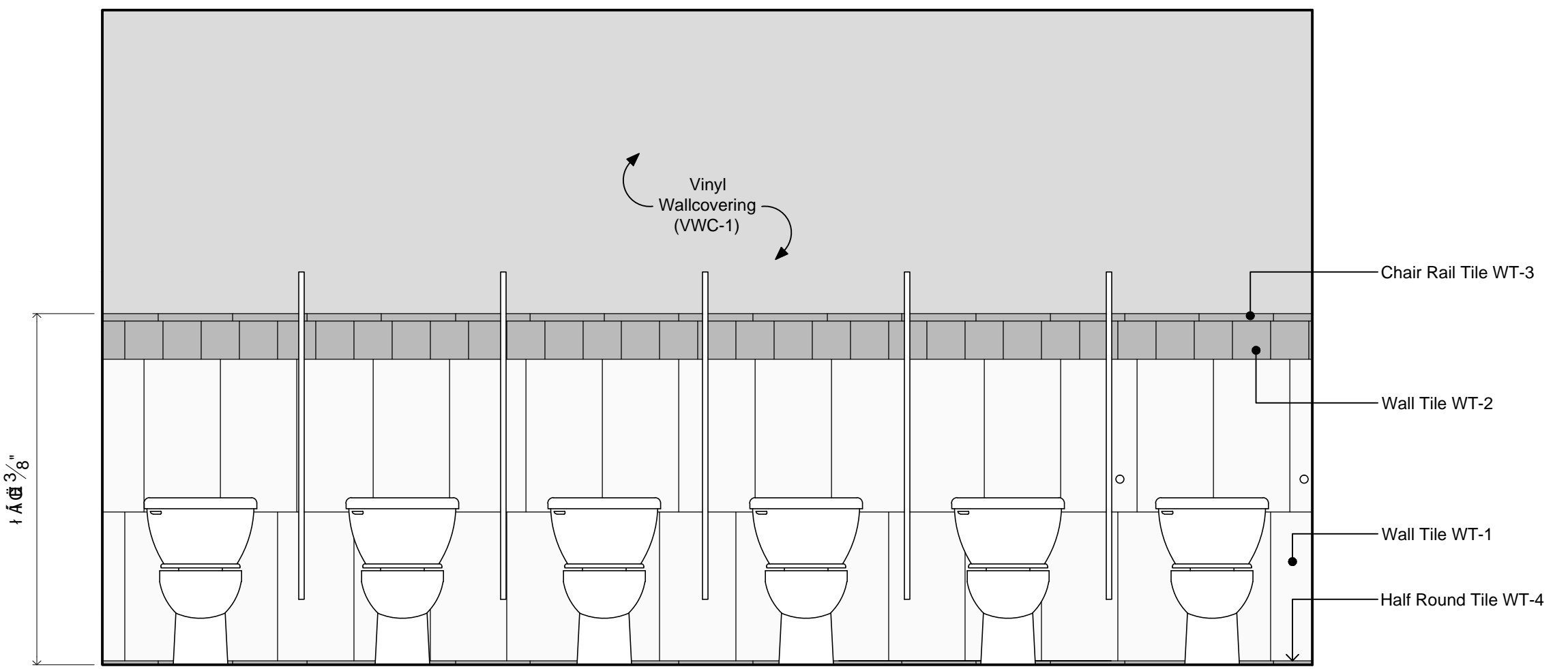
THIS DRAWING IS FOR DESIGN CONCEPT ONLY - NOT FOR CONSTRUCTION. CONSTRUCTION DOCUMENTS MUST BE SUBMITTED TO AND APPROVED BY OWNER PRIOR TO WORK COMMENCING.

THE PLANS AND FINISH SCHEDULES FOR THE REFERENCED PROJECT ARE THE SOLE INTELLECTUAL PROPERTY OF GODSHALL COMMERCIAL INTERIORS AND SHALL NOT BE USED FOR ANY OTHER PROJECT WITHOUT THE WRITTEN CONSENT OF GCI.

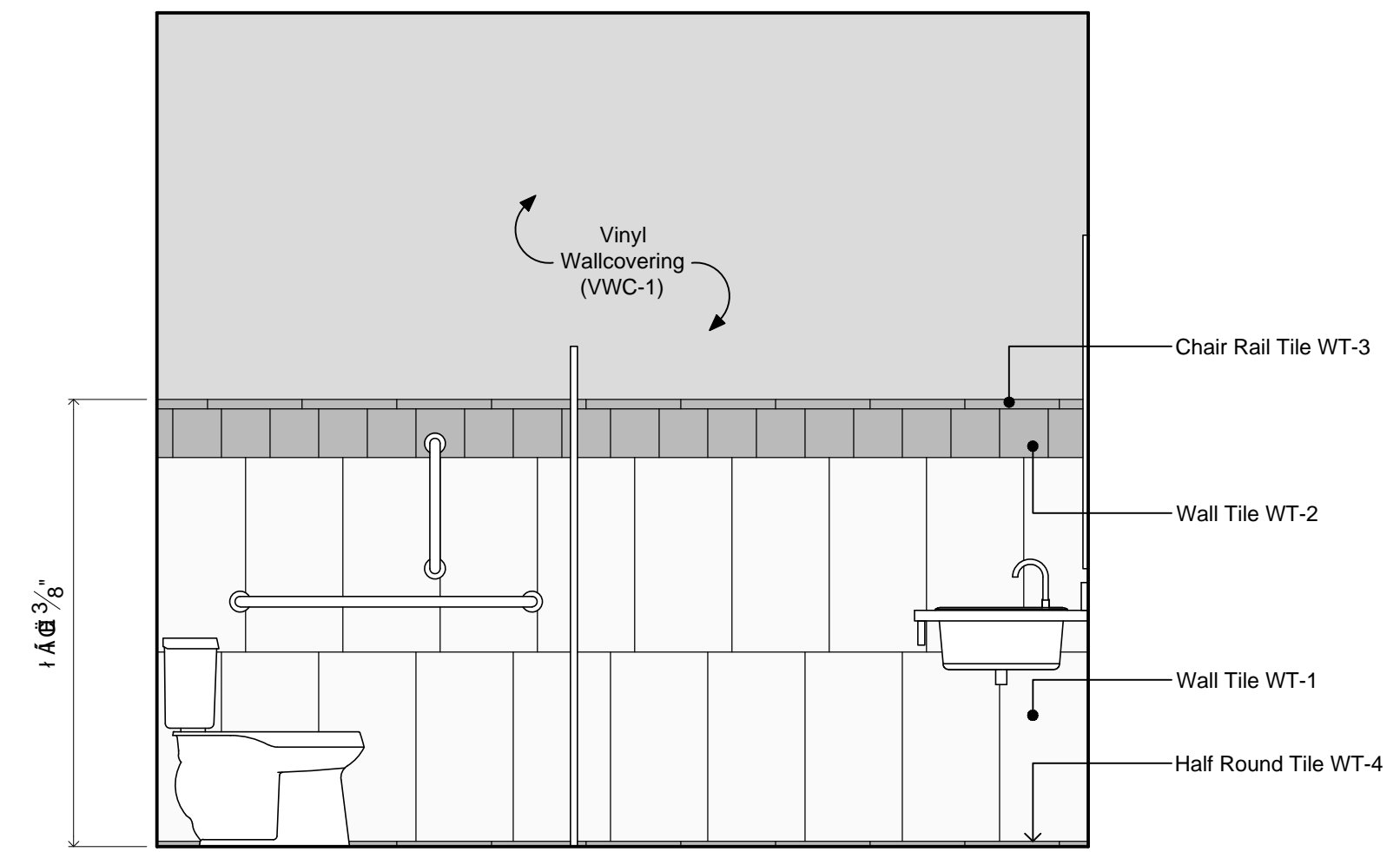
**G**  
**GODSHALL**  
**COMMERCIAL**  
**INTERIORS**  
 LANCASTER, PA  
 717-560-9717  
 gci-design@comcast.net



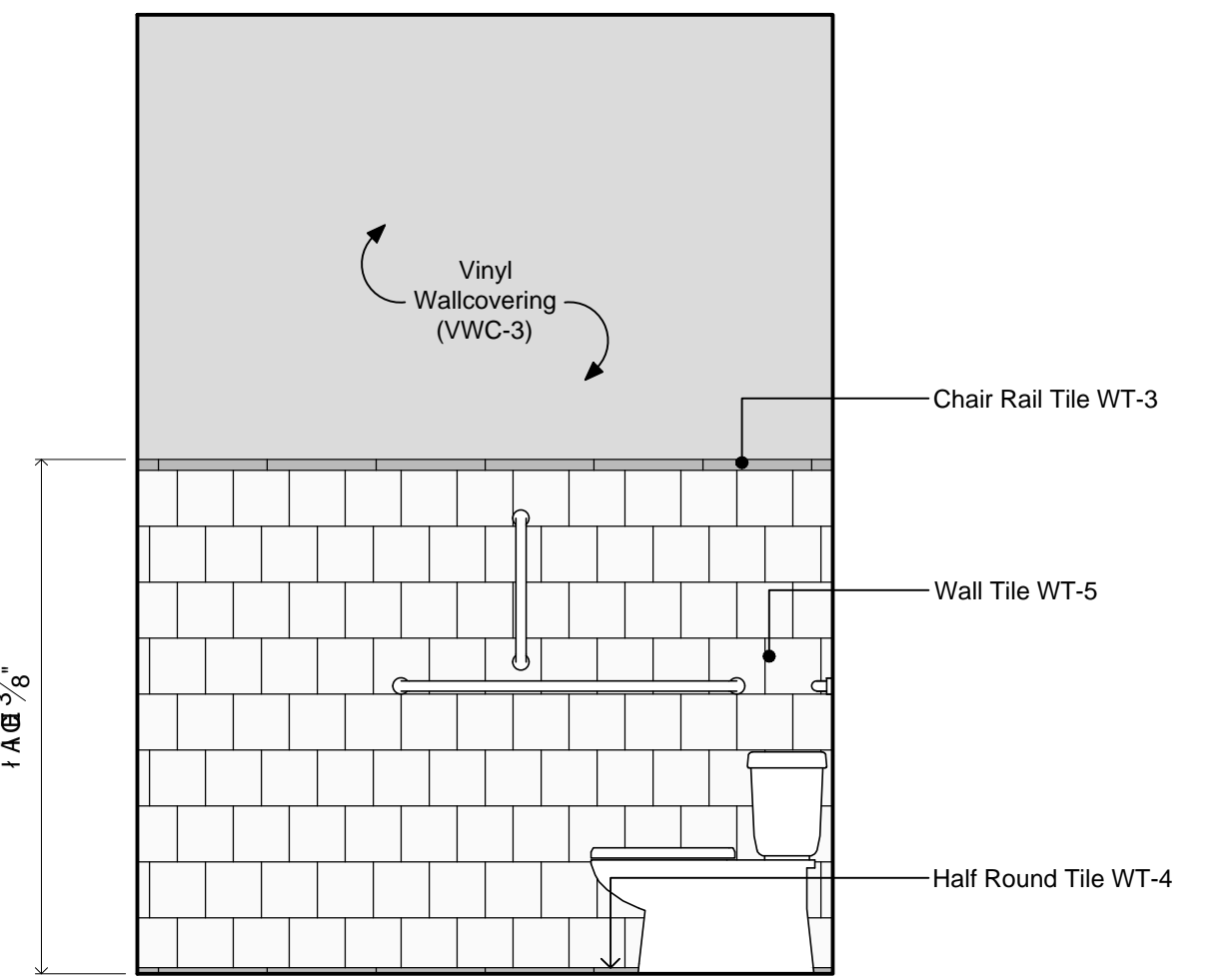
1 Women 115 - Elevation  
 ID1.3 SCALE: 1/2"=1'-0"



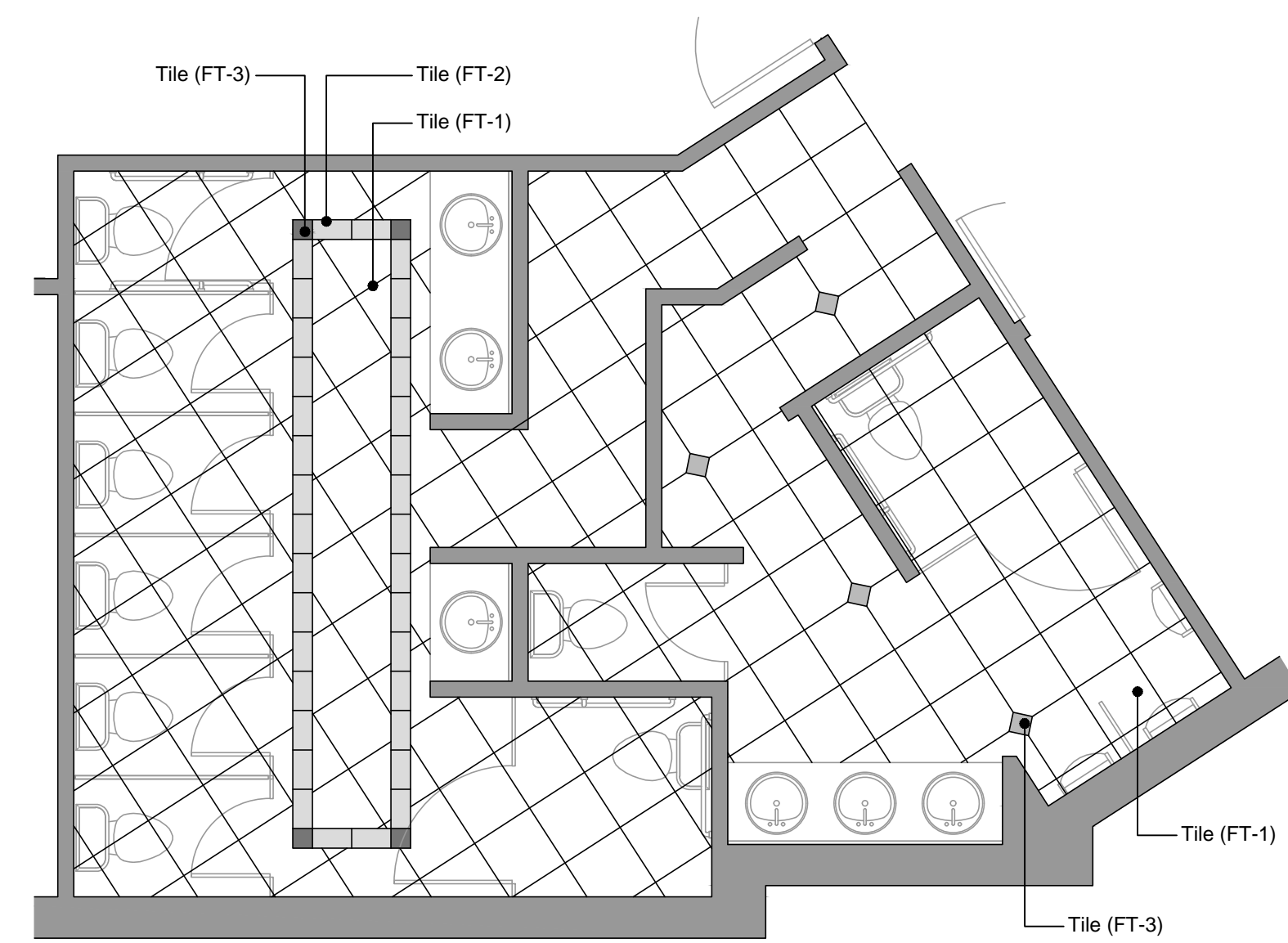
2 Women 115 - Elevation  
 ID1.3 SCALE: 1/2"=1'-0"



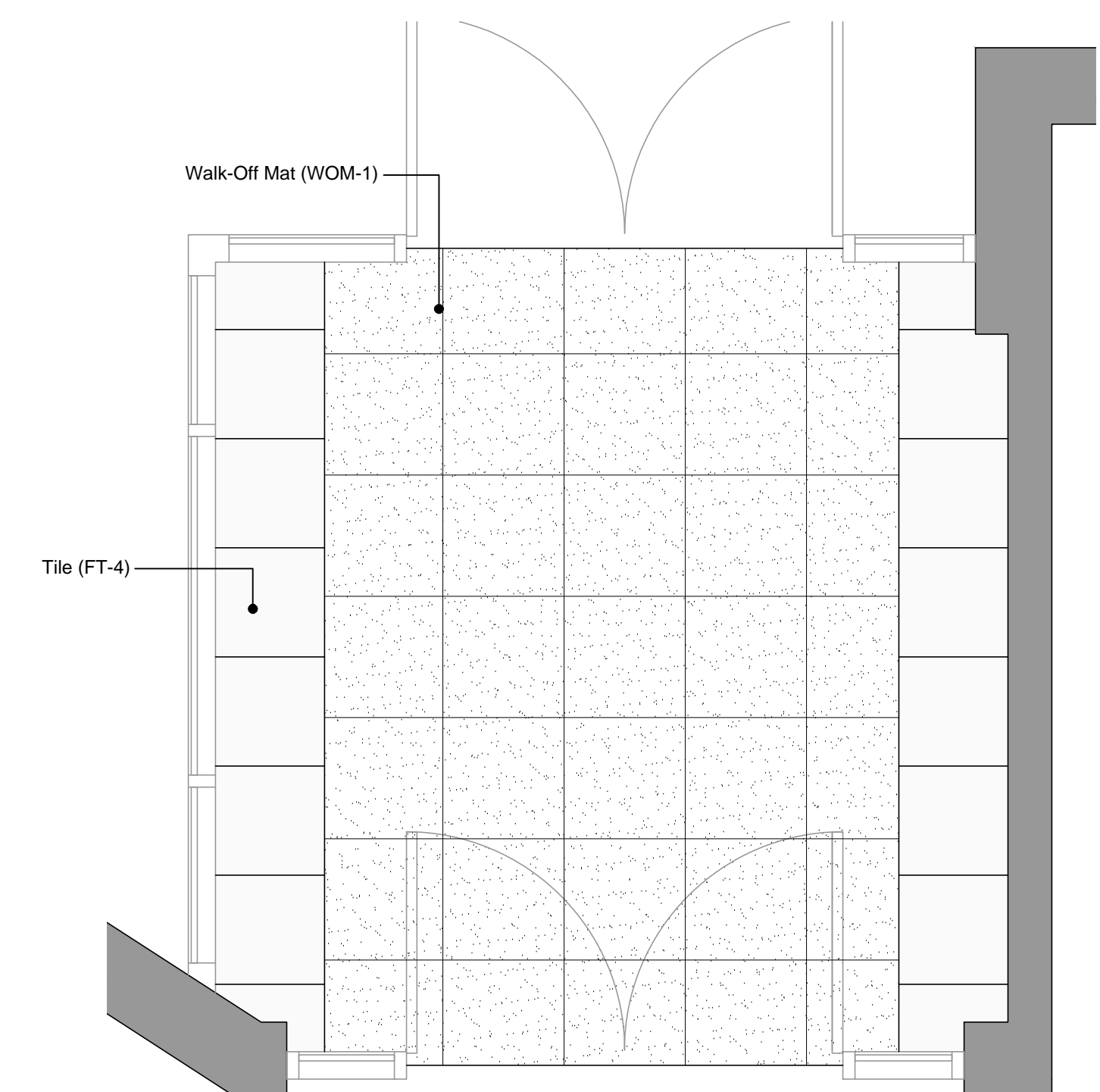
3 Women 115 - Elevation  
 ID1.3 SCALE: 1/2"=1'-0"



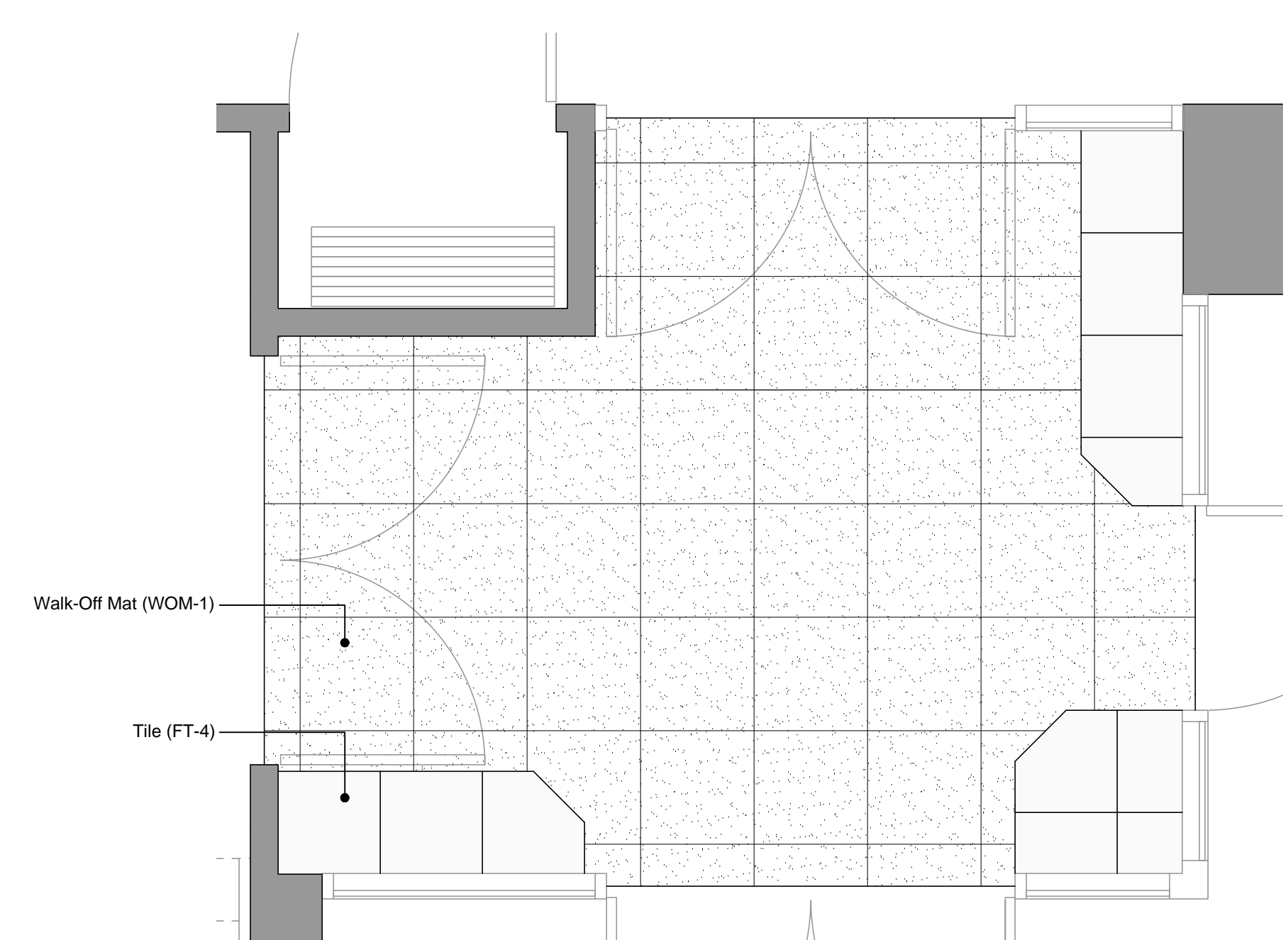
4 Unisex 112 - Elevation  
 ID1.3 SCALE: 1/2"=1'-0"



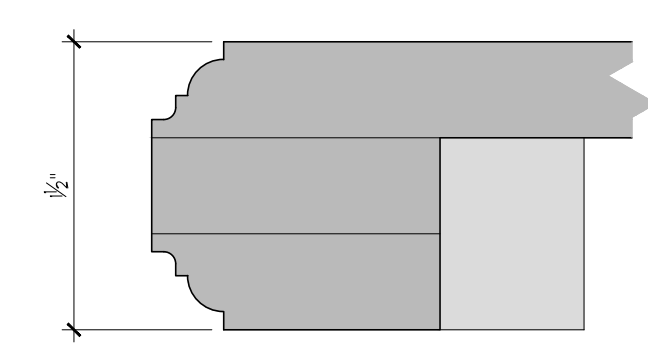
5 Men 114 & Women 115 - Enlarged Floorcovering Plan  
 ID1.3 SCALE: 1/2"=1'-0"



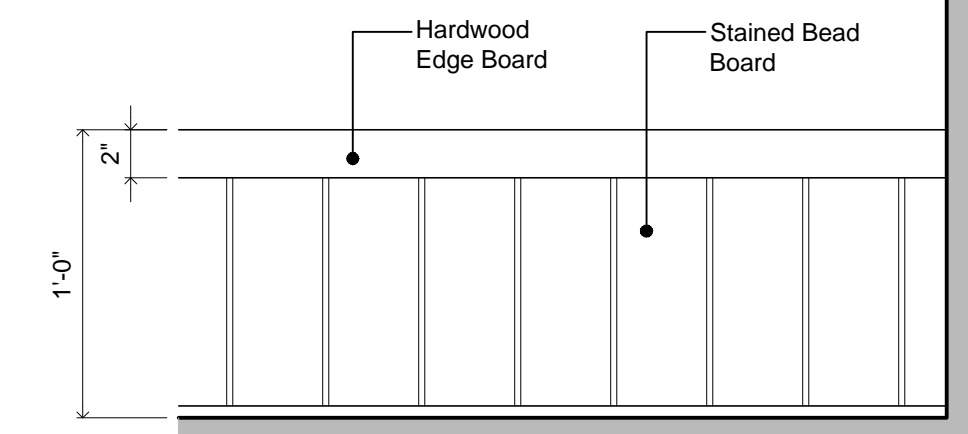
6 Vestibule 101 - Enlarged Floorcovering Plan  
 ID1.3 SCALE: 1/2"=1'-0"



7 Vestibule 101 - Enlarged Floorcovering Plan  
 ID1.3 SCALE: 1/2"=1'-0"



8 Vanity Top Edge Detail - Corian Double Classic  
 ID1.3 SCALE: FULL



9 Platform 110 - Front Elevation  
 ID1.3 SCALE: 1/2"=1'-0"

PRELIMINARY  
 Drawing Set  
 80%

Proposed Renovations for:  
**Nichols - Bethel**  
**United Methodist Church**  
 1239 Murray Rd. - Odenton, MD 21113

DRAIN BY:	DATE:	
N.M.	4-14-10	
CHECKED BY:		
L.G. & J.S.		
SCALE:		
AS NOTED		
REVISIONS		
NO.	DATE	DESCRIPTION
◇		
◇		
◇		
◇		

DETAIL  
 DRAWINGS

DRAWING NO:  
**ID1.3**